

Tapcon® SCOTS Anchors



DESCRIPTION/SUGGESTED SPECIFICATIONS

PREMIUM CONCRETE ANCHOR THAT COMBINES THE CORROSION PROTECTION OF STAINLESS STEEL WITH THE PERFORMANCE OF TAPCON ANCHORS.



ADVANTAGES

- 300 Series Stainless Steel head and Carbon Steel body.
- Integral washer design provides more bearing surface.
- Rubber EPDM sealing washer "locks-out" moisture from building interior.
- Head paint available in white or bronze (extra charge).
- Delivers the same holding performance as Tapcon anchors with Blue Climaseal™.
- Reduces replacement of "weathered" fasteners.

CORROSION RESISTANCE

Kesternich Results (DIN 50018, 2.0L)

Climaseal™

30 Cycles - 10% or less red rust

APPROVAL/LISTINGS

ICC Evaluation Service, Inc. – ESR-1671

Miami-Dade County – #12-0816.06

For the most current approvals/listings visit: www.itwredhead.com

INSTALLATION STEPS

Read installation instructions before using!



WARNING:

If there are any questions concerning proper installation, applications or appropriate use of this product, please call our Technical Services Department at 1-800-848-5611. Failure to follow these instructions can result in serious personal injury.

1. **Select proper fastener – diameter / head style / length.**
 - a) Use selection chart to choose proper length.
2. **Drill Hole – use selection chart to determine drill bit length and depth of hole.**
 - a) Use 3/16" diameter Tapcon bit.
 - b) **Drill hole minimum 1/4" deeper than Tapcon Anchor to be embedded.**
Minimum anchor embedment: 1"
Maximum anchor embedment: 1 3/4"
3. **Drive anchor using 5/16" socket.**



WARNING:

Failure to wear safety glasses with side shields can result in serious personal injury. Always wear ANSI compliant eye protection (ANSI Z87.1-2003).



WARNING:

Using the wrong size drill bit will affect performance values and may cause failure.

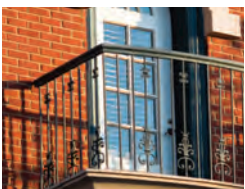
APPLICATIONS



Shutters - protective and decorative



Screened porch and pool enclosures
Aluminum fixtures
Railings



Metal roofing
Flexible flashings

SELECTION CHART

**Tapcon®
SCOTS Anchors**

Diameter 1/4" Thread Form Advanced Threadform Technology™
Point Type Nail Finish Silver Climaseal™
Head Style 5/16" HWH (300 Series Stainless)

RECOMMENDED TAPCON LENGTH		PART NO. 1/4" HEX HEAD	BIT LENGTH		PART NO. STRAIGHT SHANK BITS FOR 1/4" TAPCON
in.	(mm)		in.	(mm)	
1-3/4	(44.5)	3358407	3-1/2	(88.9)	3098910

SCOTS are packed 1,000 pieces per master, 100 pieces per inner.

SELECTION CHART

**Tapcon®
SDS Bits**

PART NO.	DESCRIPTION
3311910	7" (SDS Rotohammer Bits for use with 3/16" Tapcon)
7901060	5" (SDS Rotohammer Bits for use with 1/4" Tapcon)

PERFORMANCE TABLE

**Tapcon®
SCOTS Anchors**

**Ultimate Tension and Shear Values (lbs/kN)
in Solid Concrete**

ANCHOR DIAMETER in. (mm)	MIN. DEPTH OF EMBEDMENT in. (mm)	f _c = 2000 PSI (13.8 MPa)				f _c = 3000 PSI (20.7 MPa)				f _c = 4000 PSI (27.6 MPa)				f _c = 5000 PSI (34.5 MPa)				
		TENSION		SHEAR		TENSION		SHEAR		TENSION		SHEAR		TENSION		SHEAR		
		lbs.	(kN)	lbs.	(kN)	lbs.	(kN)	lbs.	(kN)	lbs.	(kN)	lbs.	(kN)	lbs.	(kN)	lbs.	(kN)	
1/4	1	(25.4)	750	(3.3)	900	(4.0)	775	(3.4)	900	(4.0)	800	(3.6)	1,360	(6.1)	950	(4.2)	1,440	(6.4)
	1-1/4	(31.8)	1,050	(4.7)	900	(4.0)	1,160	(5.2)	900	(4.0)	1,270	(5.6)	1,360	(6.1)	1,515	(6.7)	1,440	(6.4)
	1-1/2	(38.1)	1,380	(6.1)	1,200	(5.3)	1,600	(7.2)	1,200	(5.3)	1,820	(8.1)	1,380	(6.1)	2,170	(9.7)	1,670	(7.4)
	1-3/4	(44.5)	2,020	(9.0)	1,670	(7.4)	2,200	(9.8)	1,670	(7.4)	2,380	(10.6)	1,670	(7.4)	2,770	(12.3)	1,670	(7.4)

Allowable working loads for the single installation under static loading should not exceed 25% capacity of the Ultimate Load. To calculate the Allowable Load, divide the Ultimate Load by 4.

PERFORMANCE TABLE

**Tapcon®
SCOTS Anchors**

**Ultimate Tension and Shear Values (lbs/kN)
in Hollow Concrete Masonry Units**

ANCHOR DIAMETER in. (mm)		ANCHOR EMBEDMENT in. (mm)		LIGHTWEIGHT BLOCK				MEDIUM WEIGHT BLOCK			
				TENSION		SHEAR		TENSION		SHEAR	
				lbs.	(kN)	lbs.	(kN)	lbs.	(kN)	lbs.	(kN)
1/4	(6.4)	1	(25.4)	250	(1.1)	620	(2.8)	500	(2.2)	1,000	(4.4)

Allowable working loads for the single installation under static loading should not exceed 25% capacity of the Ultimate Load. To calculate the Allowable Load, divide the Ultimate Load by 4.

NOTE: 3/16" Tapcon requires 5/32" bit, 1/4" Tapcon requires 3/16" bit.

PERFORMANCE TABLE

**Tapcon®
SCOTS Anchors**

**Allowable Edge
and Spacing Distances**

PARAMETER	ANCHOR DIAMETER		NORMAL WEIGHT CONCRETE			CONCRETE MASONRY UNITS (CMU)		
	in.	(mm)	FULL CAPACITY (Critical Distance Inches)	REDUCED CAPACITY (Minimal Distance Inches)	LOAD REDUCTION FACTOR	FULL CAPACITY (Critical Distance Inches)	REDUCED CAPACITY (Minimal Distance Inches)	LOAD REDUCTION FACTOR
Spacing Between Anchors - Tension	1/4	(6.4)	4	2	0.66	4	2	0.84
Spacing Between Anchors - Shear	1/4	(6.4)	4	2	0.82	4	2	0.81
Edge Distance - Tension	1/4	(6.4)	2-1/2	1-1/4	0.82	4	2	0.88
Edge Distance -Shear	1/4	(6.4)	3	1-1/2	0.59	4	2	0.80

For SI: 1 inch = 25.4 mm



Call our toll free number 800-848-5611 or visit our web site for the most current product and technical information at www.itwredhead.com

