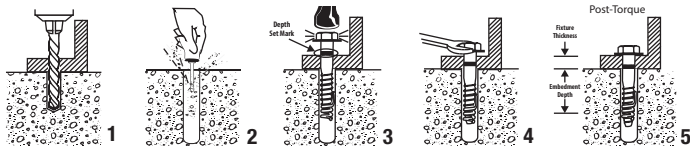


Boa Coil Expansion Anchors



- 1** Using the fixture as a template, drill the correct diameter and depth hole.
- 2** Remove debris with vacuum or hand pump.
- 3** Insert the assembled Boa Coil anchor. (The coil anchor tab points up the anchor.) Tap anchor down to depth set mark and stop.
- 4** Tighten until washer is firmly held to the fixture and stop. Number of turns to set anchor: 1/2" (3-4 turns), 5/8" (4-5 turns), and 3/4" (4-5 turns). Ensure washer is tight and snug fit.
- 5** The anchor is ready to take load. (The bolt can be removed leaving the coil in the hole.)

The Boa Coil anchor can be reused up to 3 times in new holes.