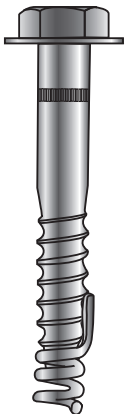


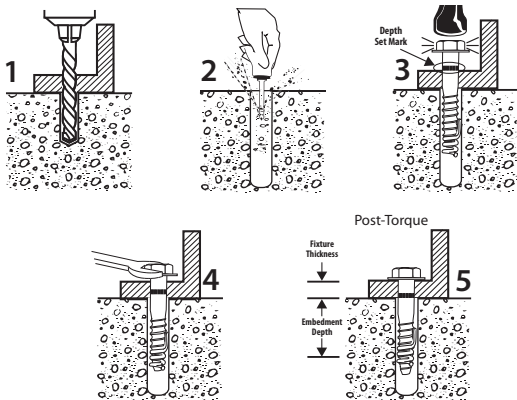


Boa™ Coil EXPANSION ANCHOR



Installation
Instructions

MANUFACTURER'S INSTALLATION STEPS



Replacement coil for easy reuse are available for the following diameter bolts.

RHC-12	1/2"
RHC-58	5/8"
RHC-34	3/4"



WARNING!

Always wear safety glasses and other necessary protective devices or apparel when installing or working with anchors.

NOTE: To achieve maximum loads the installation process needs to be carried out as follows:

1. Using the fixture as a template, drill the correct diameter and depth hole.
2. Remove debris with vacuum or hand pump.
3. Insert the assembled Boa Coil anchor. (The coil anchor tab points up the anchor.) Tap anchor down to depth set mark and stop.
4. Tighten until washer is firmly held to the fixture and stop. Number of turns to set anchor: 1/2" 3-4 turns, 5/8" and 3/4" 4-5 turns. Ensure washer is tight and snug fit.
5. The Boa Coil anchor is ready to take load. (The bolt can be removed leaving the coil in the hole.)

The Boa coil anchor can be reused up to 3 times in new holes.

ITW Red Head®

© 1-800-899-7890

www.itwredhead.com

2171 Executive Drive, Suite 100
Addison, IL 60101