

Tapcon[®]

SCOTS Anchors



DESCRIPTION/SUGGESTED SPECIFICATIONS

PREMIUM CONCRETE ANCHOR THAT COMBINES THE CORROSION PROTECTION OF STAINLESS STEEL WITH THE PERFORMANCE OF TAPCON ANCHORS.



ADVANTAGES

- 300 Series Stainless Steel Head.
- Integral washer design provides more bearing surface.
- Rubber EPDM sealing washer “locks-out” moisture from building interior.
- Head paint available in white or bronze (extra charge).
- Delivers the same holding performance as Tapcon anchors with Blue Climaseal™.
- Reduces replacement of “weathered” fasteners.

APPROVAL/LISTINGS

ICC Evaluation Service, Inc. – #ESR-1671

Miami-Dade County – #07-0315.03

Florida Building Code

INSTALLATION STEPS

Read instructions before using (installation)!



WARNING:

If there are any questions concerning proper installation, applications or appropriate use of this product, please call our Technical Services Department at 1-800-899-7890. Failure to follow these instructions can result in serious personal injury.

1. **Select proper fastener – diameter / head style / length.**
 - a) Use selection chart to choose proper length.
2. **Drill Hole – use selection chart to determine drill bit length and depth of hole.**
 - a) Choose appropriate drill of Tapcon Anchor.
 - b) Drill hole minimum ¼” deeper than Tapcon Anchor to be embedded.
 - Minimum anchor embedment: 1”
 - Maximum anchor embedment: 1-3/4”
3. **Drive anchor using DrivTru HWH Socket.**



DrivTru PART#	DESCRIPTION	APPLICATIONS
1513910	DrivTru Socket	All 5/16” across flats HWH fasteners

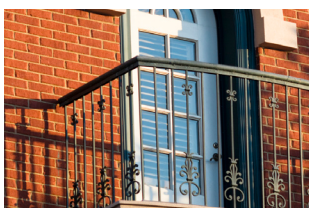
APPLICATIONS



Shutters - protective and decorative



Screened porch and pool enclosures
Aluminum fixtures
Railings



Metal roofing
Flexible flashings



WARNING:

Failure to wear safety glasses with side shields can result in serious personal injury. Always wear ANSI compliant eye protection (ANSI Z87.1-2003).



WARNING:

Using the wrong size drill bit will affect performance values and may cause failure.

Tapcon® SCOTS Anchors

SELECTION CHART

Tapcon® SCOTS Anchors

Diameter.....1/4"
Point Type.....Nail
Head Style.....5/16" HWH (300 Series Stainless)

Thread Form..... Advanced Threadform Technology™
Finish.....Silver Climaseal™

RECOMMENDED TAPCON LENGTH In. (mm)	PART NO. 1/4" HEX HEAD	BIT LENGTH In. (mm)	STRAIGHT SHANK BITS FOR 1/4" TAPCON PART NO.
1-3/4 (44.5)	3358407	3-1/2 (88.9)	7901014
2-1/4 (57.2)	3359407	4-1/2 (114.3)	7901018

*Available with bronze painted head over White UltraShield™ NOTE: 2-3/4" and 3-1/4" lengths are special orders. Contact customer service for lead-times.
SCOTS are packed 1,000 pieces per master, 100 pieces per inner.

Tapcon® SDS Bits

PART NUMBER	DESCRIPTION
790059	7" (SDS Rotohammer Bits for use with 3/16" Tapcon)
7901060	5" (SDS Rotohammer Bits for use with 1/4" Tapcon)
7901059	7" (SDS Rotohammer Bits for use with 1/4" Tapcon)

PERFORMANCE TABLES

Tapcon® SCOTS Anchors

Ultimate Tension and Shear Values (Lbs/kN) in Concrete

ANCHOR DIA. In. (mm)	MIN. DEPTH OF EMBEDMENT In. (mm)	f'c = 2000 PSI (13.8 MPa)		f'c = 3000 PSI (20.7 MPa)		f'c = 4000 PSI (27.6 MPa)		f'c = 5000 PSI (34.5 MPa)	
		TENSION Lbs. (kN)	SHEAR Lbs. (kN)	TENSION Lbs. (kN)	SHEAR Lbs. (kN)	TENSION Lbs. (kN)	SHEAR Lbs. (kN)	TENSION Lbs. (kN)	SHEAR Lbs. (kN)
1/4 (6.4)	1 (25.4)	750 (3.3)	900 (4.0)	775 (3.4)	900 (4.0)	800 (3.6)	1,360 (6.1)	950 (4.2)	1,440 (6.4)
	1-1/4 (31.8)	1,050 (4.7)	900 (4.0)	1,160 (5.2)	900 (4.0)	1,270 (5.6)	1,360 (6.1)	1,515 (6.7)	1,440 (6.4)
	1-1/2 (38.1)	1,380 (6.1)	1,200 (5.3)	1,600 (7.2)	1,200 (5.3)	1,820 (8.1)	1,380 (6.1)	2,170 (9.7)	1,670 (7.4)
	1-3/4 (44.5)	2,020 (9.0)	1,670 (7.4)	2,200 (9.8)	1,670 (7.4)	2,380 (10.6)	1,670 (7.4)	2,770 (12.3)	1,670 (7.4)

Safe working loads for single installation under static loading should not exceed 25% of the ultimate load capacity.

Tapcon® SCOTS Anchors

Ultimate Tension and Shear Values (Lbs/kN) in Hollow Block

ANCHOR DIA. In. (mm)	ANCHOR EMBEDMENT In. (mm)	LIGHTWEIGHT BLOCK		MEDIUM WEIGHT BLOCK	
		TENSION Lbs. (kN)	SHEAR Lbs. (kN)	TENSION Lbs. (kN)	SHEAR Lbs. (kN)
1/4 (6.4)	1 (25.4)	250 (1.1)	620 (2.8)	500 (2.2)	1,000 (4.4)

Safe working loads for single installation under static loading should not exceed 25% of the ultimate load capacity.

NOTE: 3/16" Tapcon requires 5/32" bit, 1/4" Tapcon requires 3/16" bit.

Tapcon® SCOTS Anchors

Allowable Edge and Spacing Distances

PARAMETER	ANCHOR DIA. In. (mm)	NORMAL WEIGHT CONCRETE			CONCRETE MASONRY UNITS (CMU)		
		FULL CAPACITY (Critical Distance Inches)	REDUCED CAPACITY (Minimal Distance Inches)	LOAD REDUCTION FACTOR	FULL CAPACITY (Critical Distance Inches)	REDUCED CAPACITY (Minimal Distance Inches)	LOAD REDUCTION FACTOR
Spacing Between Anchors - Tension	1/4	4	2	0.66	4	2	0.84
Spacing Between Anchors - Shear	1/4	4	2	0.82	4	2	0.81
Edge Distance - Tension	1/4	2-1/2	1-1/4	0.82	4	2	0.88
Edge Distance - Shear	1/4	3	1-1/2	0.59	4	2	0.80

For SI: 1 inch = 25.4 mm

