

Tapcon® Storm Guard Anchors



APPLICATIONS



Direct mount permanent anchors for quick and easy installations for metal and plywood panels to wood, hollow block and concrete.

DESCRIPTION/SUGGESTED SPECIFICATIONS

DIRECT MOUNT PERMANENT ANCHORS FOR QUICK AND EASY INSTALLATIONS OF METAL AND PLYWOOD PANELS TO CONCRETE AND BLOCK.



ADVANTAGES

- White UltraShield™ for corrosion protection in coastal environments.
- 1/4-20 x 7/8" external thread above collar.
- No caulking required.
- Threaded chamfered safety collar prevents overdriving.
- 3/16" Hex Drive.
- Use with ANSI standard 3/16" carbide-tipped drill bit. (bit not included)

CORROSION RESISTANCE

Salt Spray Test (ASTM B117) **White UltraShield**
1500 Hrs 10% or less red rust

APPROVAL/LISTINGS

Miami-Dade County

For the most current approvals/listings visit: www.itwredhead.com

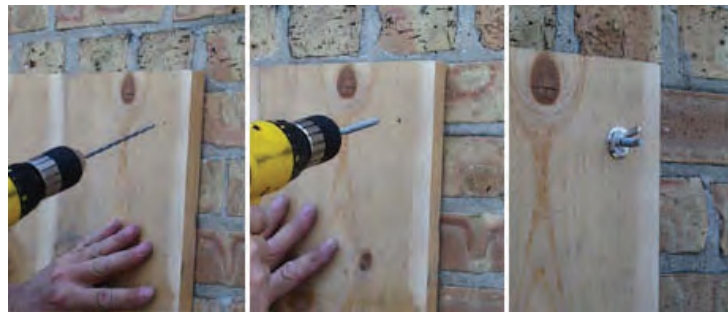
INSTALLATION STEPS

Read installation instructions before using!



CAUTION:

DO NOT BEND DRILL BIT.
DO NOT FORCE THE DRILL BIT INTO BASE MATERIAL.



WARNING:

Failure to wear safety glasses with side shields can result in serious personal injury. Always wear ANSI compliant eye protection (ANSI Z87.1-2003).



WARNING:

Using the wrong size drill bit will affect performance values and may cause failure.